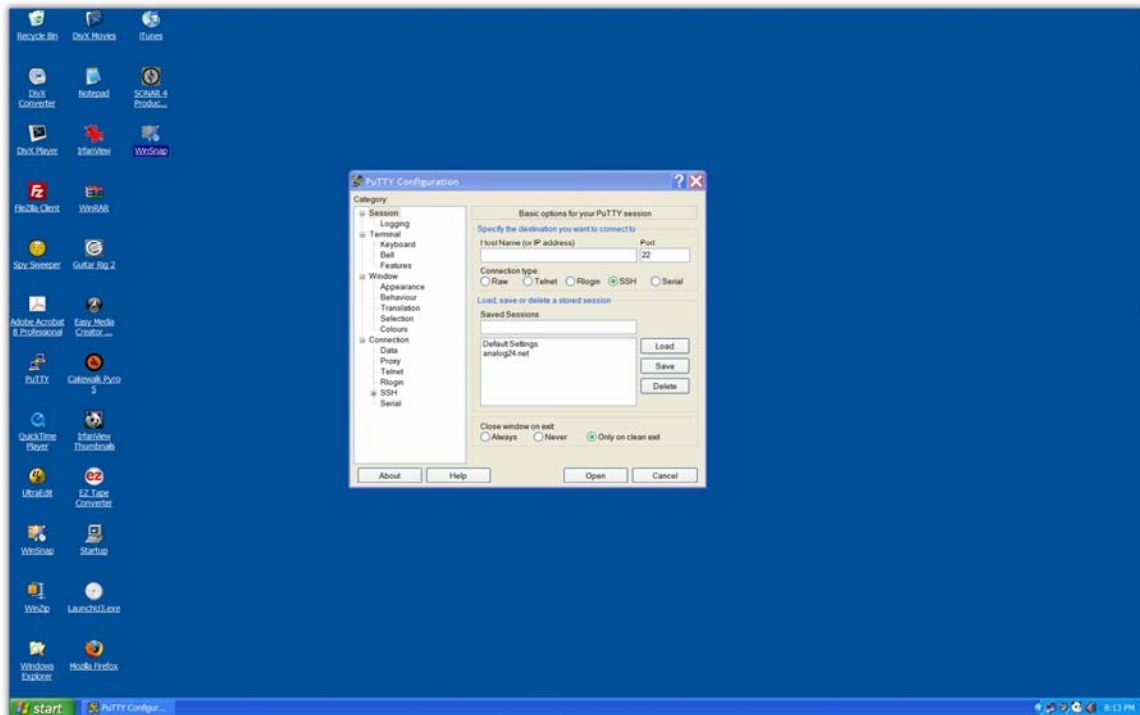


# A Very Small PuTTY Tutorial

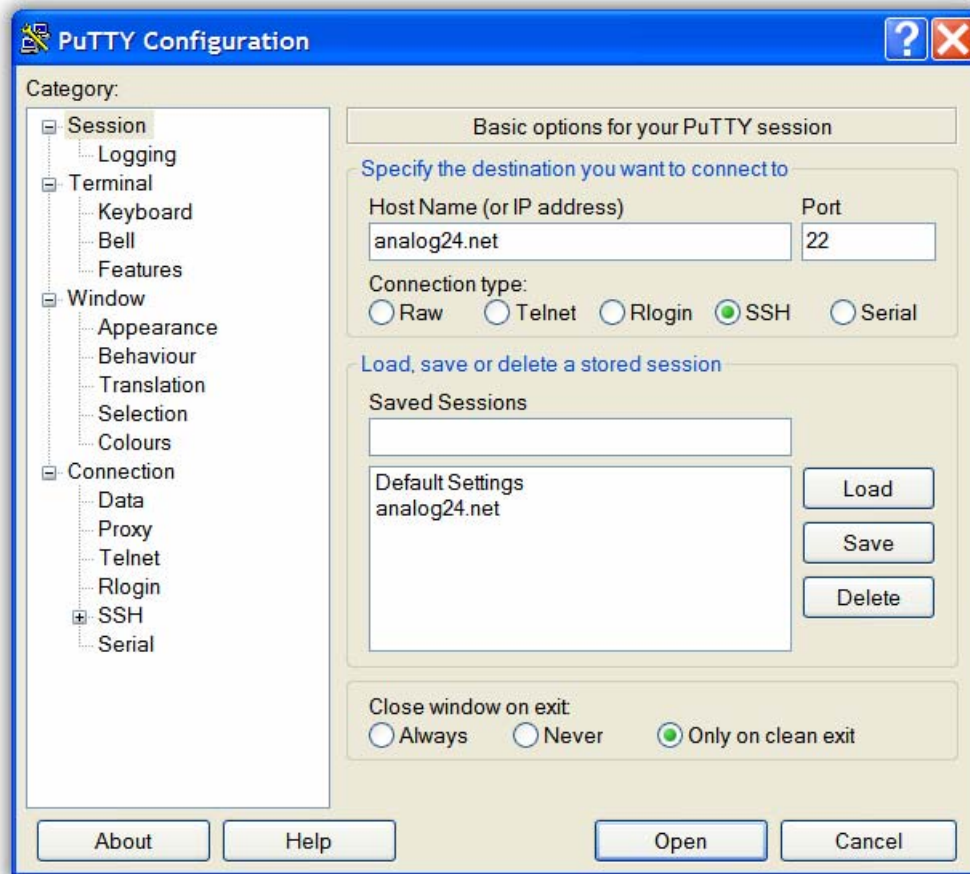
## 1. Click on the Putty icon



## 2. Something close to the screen shot above should be present

# A Very Small PuTTY Tutorial

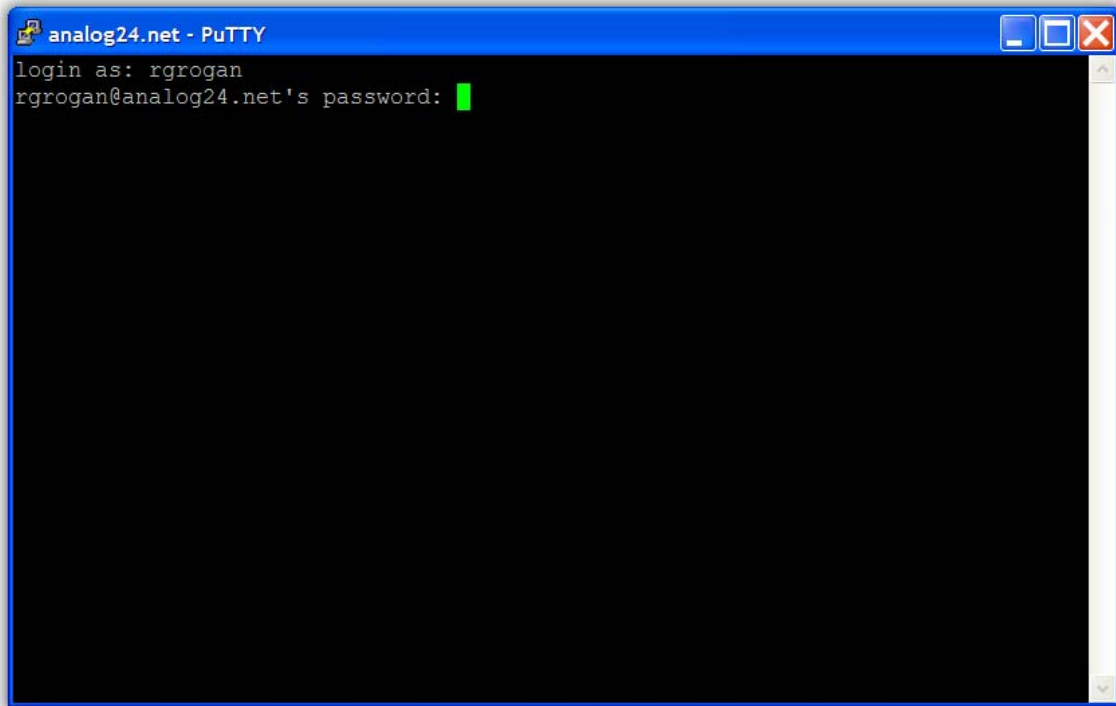
3. Fill in Host Name, Port, SSH, and Close window on exit as shown



4. Click the Open button

# A Very Small PuTTY Tutorial

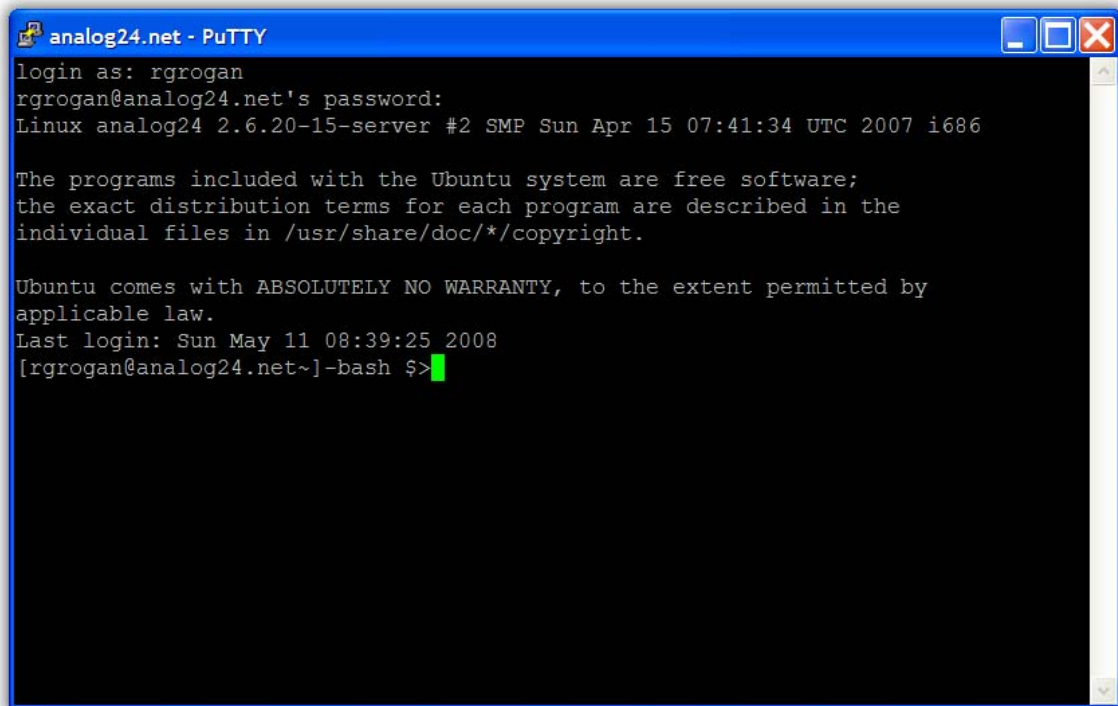
5. Enter your username then <enter>



6. Enter your password then <enter>

# A Very Small PuTTY Tutorial

7. You should be logged into your account



```
analog24.net - PuTTY
login as: rgrogan
rgrogan@analog24.net's password:
Linux analog24 2.6.20-15-server #2 SMP Sun Apr 15 07:41:34 UTC 2007 i686

The programs included with the Ubuntu system are free software;
the exact distribution terms for each program are described in the
individual files in /usr/share/doc/*/copyright.

Ubuntu comes with ABSOLUTELY NO WARRANTY, to the extent permitted by
applicable law.
Last login: Sun May 11 08:39:25 2008
[rgrogan@analog24.net~]-bash $>
```

8. Press CTRL+D to exit the PuTTY session